

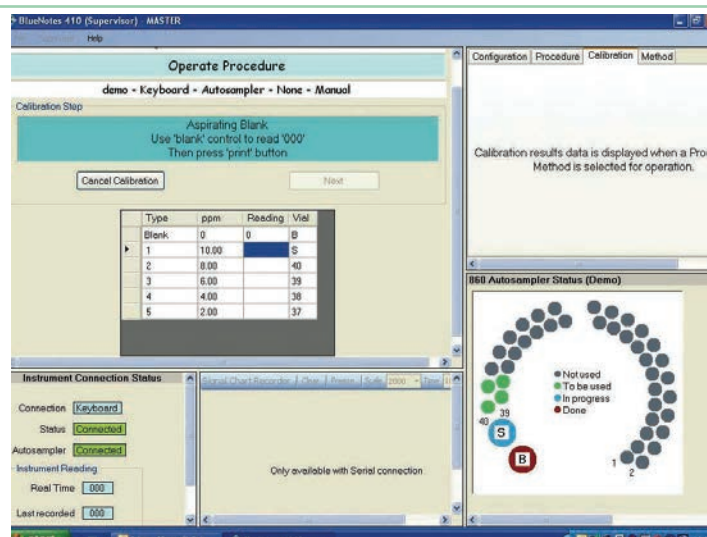
SHERWOOD SCIENTIFIC FLAME PHOTOMETERS

ACCESSORIES

410 BLUENOTES SOFTWARE EVERYTHING VISIBLE ON ONE OPERATIONAL PAGE

With the 410 BlueNotes™ software package you can:

- Use real names and sample numbers in your reports
- Perform Multipoint calibrations with curve fit
- Automatically correct for instrument drift
- Save methods
- Save calibration curves and archive results
- Prepare and print professional reports
- Use Automatic Peak Selection facility to assess stability of readings
- Automate analyses with addition of the 860 Autosampler



410 BlueNotes is a package designed not just for data collection, storage, manipulation and report generation; it can also improve throughput, enhance precision and extend the utility of the model 410.

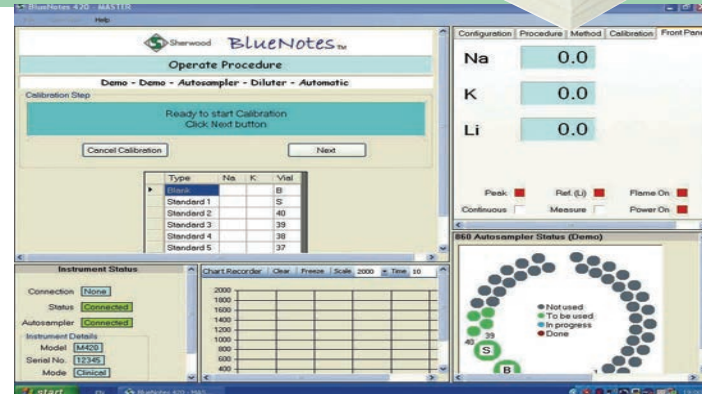


Serial Printer: For those who just require a simple printed record of results with a time and date stamp, we have available a serial printer which can connect via RS232 to the digital interface in either of the model 410's or to the RS232 port on the rear panel of the dual channel model 420 or 425.



BLUENOTES SOFTWARE MULTI CHANNEL

This package allows collection and viewing of signals from all four (M425) or all three (420) detectors simultaneously. Selection of Lithium or Potassium as an internal standard reference is possible. In addition to the instrument's single point calibration, operation with 420 BlueNotes offers multipoint calibrations, allowing operation beyond the linear response range of the instrument. Automatic report generation is standard (PC and printer not supplied).



Алматы (7273)495-231
Ангарск (3955)60-70-56
Архангельск (8182)63-90-72
Астрахань (8512)99-46-04
Барнаул (3852)73-04-60
Белгород (4722)40-23-64
Благовещенск (4162)22-76-07
Брянск (4832)59-03-52
Владивосток (423)249-28-31
Владикавказ (8672)28-90-48
Владимир (4922)49-43-18
Волгоград (844)278-03-48
Вологда (8172)26-41-59
Воронеж (473)204-51-73
Екатеринбург (343)384-55-89

Иваново (4932)77-34-06
Ижевск (3412)26-03-58
Иркутск (395)279-98-46
Казань (843)206-01-48
Калининград (4012)72-03-81
Калуга (4842)92-23-67
Кемерово (3842)65-04-62
Киров (8332)68-02-04
Коломна (4966)23-41-49
Кострома (4942)77-07-48
Краснодар (861)203-40-90
Красноярск (391)204-63-61
Курск (4712)77-13-04
Курган (3522)50-90-47
Липецк (4742)52-20-81

Магнитогорск (3519)55-03-13
Москва (495)268-04-70
Мурманск (8152)59-64-93
Набережные Челны (8552)20-53-41
Нижний Новгород (831)429-08-12
Новокузнецк (3843)20-46-81
Ноябрьск (3496)41-32-12
Новосибирск (383)227-86-73
Омск (3812)21-46-40
Орел (4862)44-53-42
Оренбург (3532)37-68-04
Пенза (8412)22-31-16
Петрозаводск (8142)55-98-37
Псков (8112)59-10-37
Пермь (342)205-81-47

Ростов-на-Дону (863)308-18-15
Рязань (4912)46-61-64
Томск (3822)98-41-53
Тула (4872)33-79-87
Тюмень (3452)66-21-18
Ульяновск (8422)24-23-59
Улан-Удэ (3012)59-97-51
Уфа (347)229-48-12
Хабаровск (4212)92-98-04
Смоленск (4812)29-41-54
Сочи (862)225-72-31
Ставрополь (8652)20-65-13
Сургут (3462)77-98-35
Сыктывкар (8212)25-95-17
Тамбов (4752)50-40-97
Тверь (4822)63-31-35

Тольятти (8482)63-91-07
Томск (3822)98-41-53
Тула (4872)33-79-87
Тюмень (3452)66-21-18
Ульяновск (8422)24-23-59
Улан-Удэ (3012)59-97-51
Уфа (347)229-48-12
Хабаровск (4212)92-98-04
Смоленск (4812)29-41-54
Сочи (862)225-72-31
Ставрополь (8652)20-65-13
Сургут (3462)77-98-35
Сыктывкар (8212)25-95-17
Тамбов (4752)50-40-97
Тверь (4822)63-31-35

Россия +7(495)268-04-70

Казахстан +7(7172)727-132

Киргизия +996(312)96-26-47

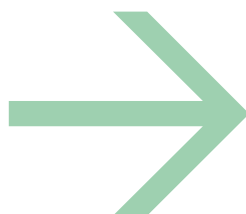
<https://sherwood.nt-rt.ru/> || sdo@nt-rt.ru

SHERWOOD SCIENTIFIC FLAME PHOTOMETERS

THE MODEL 805 CONTINUOUS FLOW DILUTER

- Dual Rotor for reproducible ratios
- Positive Pumping for accurate measurements
- Uptake from original sample vessel
- Fibrin clot remover
- Excellent overall system performance

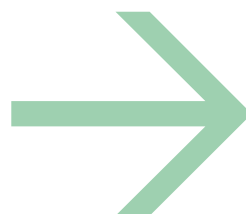
The model 805 Diluter can work with all Sherwood Flame Photometers. It features two pump mechanisms, one for sample and one for diluent, which are permanently linked to ensure reproducible dilution ratios. Designed for the 200:1 dilution ratio used for Na and K solutions in clinical samples, it also allows a 50:1 ratio for clinical Lithium. When used with model 420 or 425 Flame Photometers, the Diluter automatically adds Lithium at the optimal concentration to act as an internal reference for improved precision of results.



THE MODEL 860 AUTOSAMPLER

- 40 sample capacity
- Separate positions for Blank and Calibrant
- Designed for use with 420 and 425 Flame Photometers
- Works with or without Sherwood Model 805 Diluter
- Works with 410 but only with 410 BlueNotes™ Software.

The models 420 and 425 Flame Photometers were designed to interface bidirectionally with the model 860; control sits in the Flame Photometer. The model 410 with Digital Interface, requires 410 BlueNotes™ software to run the M860 Autosampler



MODEL 851 AND 855 COMPRESSORS

A critical component for good operation. We have two Air Compressors available for use with Sherwood Flame Photometers; the model 851 and model 855 (shown). The 855 has a water-cooled trap for operation in humid atmospheres. Both provide a dedicated, clean, dry air supply which is vital to achieving stable flame conditions and constant sample delivery.



FUEL GAS REGULATORS

We can supply fuel gas regulators to fit gas cylinders. The Dual channel Flame Photometers require a supply greater than one bar of pressure and are only for use with Propane, Butane or LPG. The M410's can be used with Natural Gas but only if the Natural Gas Regulator Kit is purchased and fitted. The M360 Nat Gas model will work as supplied with Natural Gas.

SHERWOOD SCIENTIFIC FLAME PHOTOMETERS

ORDERING INFORMATION PART NUMBERS

STOCK CODE	DESCRIPTION	MODEL
INSTRUMENTS		
36000009	M360 5-ELEMENT FLAME PHOTOMETER - Propane/Butane	M360
36000109	M360 5-ELEMENT FLAME PHOTOMETER - Natural Gas	M360
36000209	M360 C FLAME PHOTOMETER - Propane/Butane	M360
47541200	M410 CLASSIC	M410
47541201	M410 INDUSTRIAL	M410
47541301	M410 C	M410
47542000	M420C 2-CHANNEL FLAME PHOTOMETER	M420
47542100	M420 2-CHANNEL INDUSTRIAL FLAME PHOTOMETER	M420
47542500	M425 FOUR-ELEMENT FLAME PHOTOMETER	M425

410 INSTRUMENT UPGRADE/AUTOMATION

NOTE: When ordering these products you must state the Serial Number of the flame photometer to which they will be fitted.

41086001	DIGITAL INTERFACE/LINEARISER	M410 CLASSIC and ALL earlier M410's *see NOTE above*
41086002	BlueNotes UPGRADE for M410 (Digital Interface 41086001 + 410 BlueNotes software 41066000)	
41086003	BlueNotes UPGRADE/AUTOMATION PACKAGE (860 Autosampler 86000009 + BlueNotes Upgrade 41086002)	
41066000	M410 BlueNotes SOFTWARE	M410 INDUSTRIAL + CLINICAL
41086004	BlueNotes AUTOMATION PACKAGE (860 Autosampler 86000009 + 410 BlueNotes software 41066000)	

ACCESSORIES & SOLUTIONS

86000009	M860 AUTOSAMPLER - 40 PLACE	All
47541100	M805 DILUTOR, CONTINUOUS FLOW	All
85101000	AIR COMPRESSOR M851/115V, BOXED FOR SHIPMENT	All
85101001	AIR COMPRESSOR M851/230V, BOXED FOR SHIPMENT	All
00108234	REGULATOR, PROPANE, PRIMARY ASSEMBLY	All
00108439	REGULATOR, BUTANE, PRIMARY ASSEMBLY	All
00108732	REGULATOR, CAMPING GAZ	All
47708400	REGULATOR, FOR DISPOSABLE PROPANE CYLINDERS	All
40020001	RESTRICTOR, BUTANE/PROPANE ASSEMBLY	M410
41019002	REG. KIT, NATURAL GAS INC FILTER	M410
00108233	REGULATOR, PROPANE, FRENCH	All
00156100	SOLUTION, 140Na/5K/1.5Li 1X100ML	M360/410/M420C
00156124	SOL'N 1000PPM BARIUM STD 100ML	M360
00156620	SOL'N 1000PPM SODIUM STD 6X100ML	M360/410/M420
00156621	SOL'N 1000PPM POTASSIUM STD 6X100ML	M360/410/M420
00156622	SOL'N 1000PPM LITHIUM STD 6X100ML	M360/410/M420
	SOL'N 1000PPM CALCIUM STD 6X100ML	M360/410/M425

INTRODUCTION AND HERITAGE



Sherwood Scientific Ltd., develops and manufactures a range of scientific instruments and apparatus with application in many industries, as well as in education and research.

Known for high quality and reliability, Sherwood Scientific products are all manufactured at the company's base in Cambridge, UK and sold and supported through an extensive distributor network covering over 80 countries. Fully equipped training and laboratory facilities enable Sherwood Scientific to offer courses to our distributors on all products and to undertake

consultancy projects in analytical measurement and process control. The history of Sherwood Scientific can be traced back more than 70 years to applications of the selenium photocell in early Flame Photometers – now the largest and most diverse of our product lines. The company's heritage also encompasses the Lab Scale Fluid Bed Dryer and Magnetic Susceptibility Balance developed under the auspices of Johnson Matthey, and the acquisition and further development of several Corning and CIBA Corning instruments: Colorimeters and Chloride Analysers.

PRODUCTS

FLAME PHOTOMETERS

Building upon the acclaimed Corning M410, we now manufacture the widest range of Instruments and Accessories: single and multi-channel, with analogue and digital outputs, free-standing and software controlled units and automated analysis packages for Sodium, Potassium, Lithium, Calcium, Barium, Cesium, Rubidium and Strontium analysis

MODEL 501 FLUID BED DRYER

This is a bench top, lab-scale, programmable Fluid Bed Dryer. The microprocessor controlled base unit accommodates the widest range of tub configurations and materials. We select inlet and outlet filters to complement a broad variety of sample types and particle sizes. With in-tub temperature and humidity feedback capability coupled to a software package providing real-time drying condition feedback. This unit allows rapid development of drying protocols and understanding of material drying behaviour.

CHLORIDE ANALYSERS

Our Chloride analysers use coulometric titration technology; offering the best available means of Chloride determination in food, pharmaceutical and industrial products etc. In addition sweat chloride measurement is also possible, (with samples as small as 20ul), as required for assistance with Cystic Fibrosis confirmation.

CHROMA COLORIMETERS

Our CHROMA colorimeter range offers two fully open, programmable units; which may be utilised with any commercial test kits for water quality monitoring, clinical chemistry measurements and many other colorimetric determinations. We also have a digital equivalent to the renowned Corning 252, for instant, no frills, reliable Absorbance & %Transmission measurements.

MAGNETIC SUSCEPTIBILITY BALANCES

For those studying magnetic properties of materials, our Magnetic Susceptibility Balances offer unsurpassed sensitivity and reliability. We truly are world leaders in this field of analytical chemistry



Алматы (7273)495-231
Ангарск (3955)60-70-56
Архангельск (8182)63-90-72
Астрахань (8512)99-46-04
Барнаул (3852)73-04-60
Белгород (4722)40-23-64
Благовещенск (4162)22-76-07
Брянск (4832)59-03-52
Владивосток (423)249-28-31
Владикавказ (8672)28-90-48
Владимир (4922)49-43-18
Волгоград (844)278-03-48
Вологда (8172)26-41-59
Воронеж (473)204-51-73
Екатеринбург (343)384-55-89

Иваново (4932)77-34-06
Ижевск (3412)26-03-58
Иркутск (395)279-98-46
Казань (843)206-01-48
Калининград (4012)72-03-81
Калуга (4842)92-23-67
Кемерово (3842)65-04-62
Киров (8332)68-02-04
Коломна (4966)23-41-49
Кострома (4942)77-07-48
Краснодар (861)203-40-90
Красноярск (391)204-63-61
Курск (4712)77-13-04
Курган (3522)50-90-47
Липецк (4742)52-20-81

Магнитогорск (3519)55-03-13
Москва (495)268-04-70
Мурманск (8152)59-64-93
Набережные Челны (8552)20-53-41
Нижний Новгород (831)429-08-12
Новокузнецк (3843)20-46-81
Ноябрьск (3496)41-32-12
Новосибирск (383)227-86-73
Омск (3812)21-46-40
Орел (4862)44-53-42
Оренбург (3532)37-68-04
Пенза (8412)22-31-16
Петрозаводск (8142)55-98-37
Псков (8112)59-10-37
Пермь (342)205-81-47

Ростов-на-Дону (863)308-18-15
Рязань (4912)46-61-64
Самара (846)206-03-16
Санкт-Петербург (812)309-46-40
Саратов (845)249-38-78
Севастополь (8692)22-31-93
Саранск (8342)22-96-24
Симферополь (3652)67-13-56
Смоленск (4812)29-41-54
Сочи (862)225-72-31
Ставрополь (8652)20-65-13
Сургут (3462)77-98-35
Сыктывкар (8212)25-95-17
Тамбов (4752)50-40-97
Тверь (4822)63-31-35

Тольятти (8482)63-91-07
Томск (3822)98-41-53
Тула (4872)33-79-87
Тюмень (3452)66-21-18
Ульяновск (8422)24-23-59
Улан-Удэ (3012)59-97-51
Уфа (347)229-48-12
Хабаровск (4212)92-98-04
Чебоксары (8352)28-53-07
Челябинск (351)202-03-61
Череповец (8202)49-02-64
Чита (3022)38-34-83
Якутск (4112)23-90-97
Ярославль (4852)69-52-93

Россия +7(495)268-04-70

Казахстан +7(7172)727-132

Киргизия +996(312)96-26-47

<https://sherwood.nt-rt.ru/> || sdo@nt-rt.ru